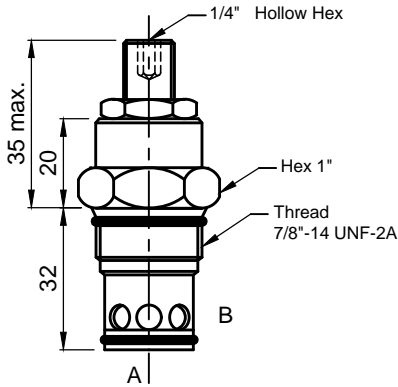


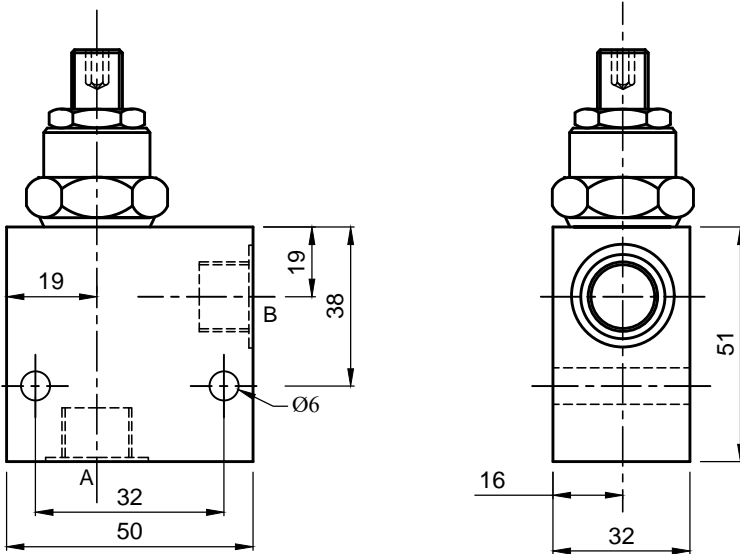


NEEDLE VALVES

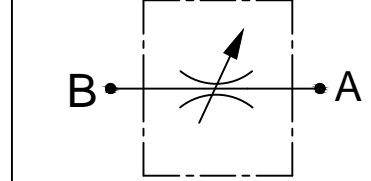
NV 03-XX-ZZ



Cartridge



Cartridge With Body



Metered Flow-Either Direction

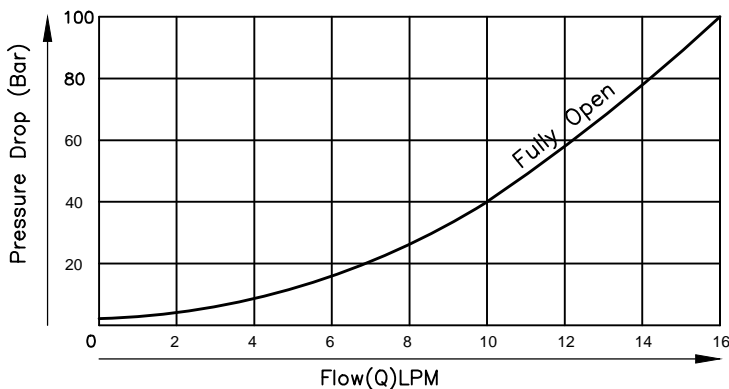
Specifications

Maximum Flow	60 LPM
Maximum Inlet Pressure	245 Bar
Cavity	C10-2

General Description

The NV Series, Needle Valves provides speed control and shut-off where a reverse flow check is not required. The valve acts as a fixed orifice in a hydraulic circuit. The effective size of orifice increase as the tapered needle is opened, Shut-off is provide when fully closed, Flow can be metered with this cartridge in either direction.

Performance Curve



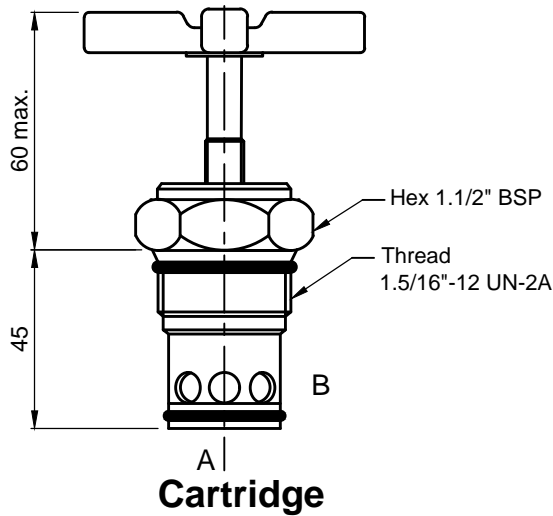
XX	Mounting Style
00	Cartridge
IL	Inline

ZZ	PORTS
00	Cartridge
12	1/2" BSP (STD)
34	3/4" BSP

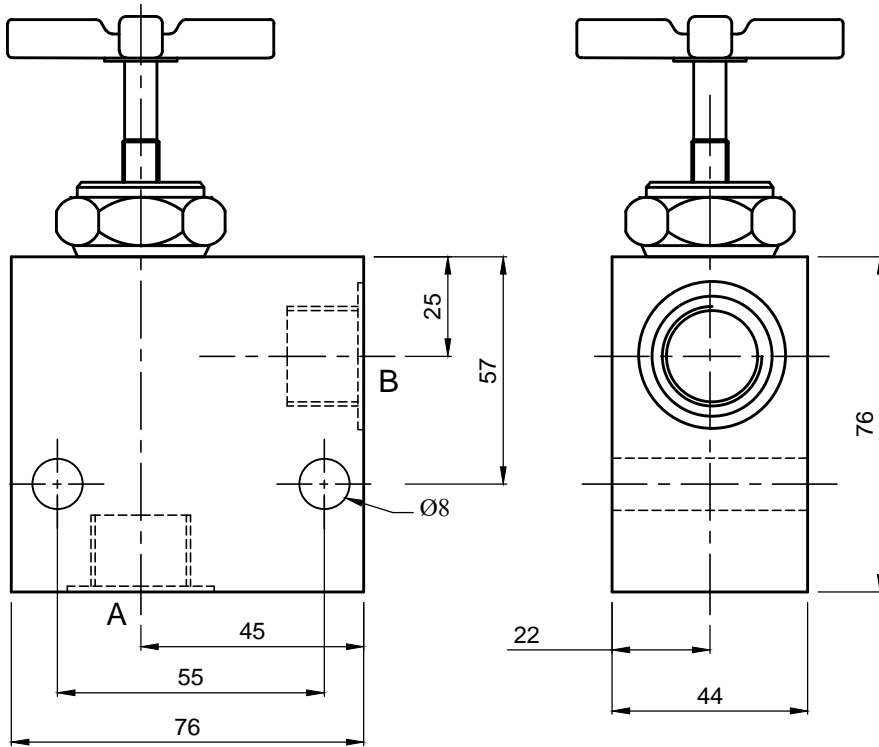


NEEDLE VALVES

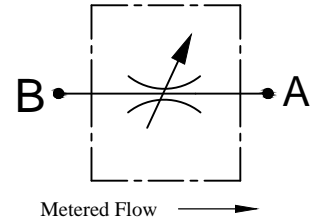
NV 04-XX-ZZ



Cartridge



Cartridge With Body



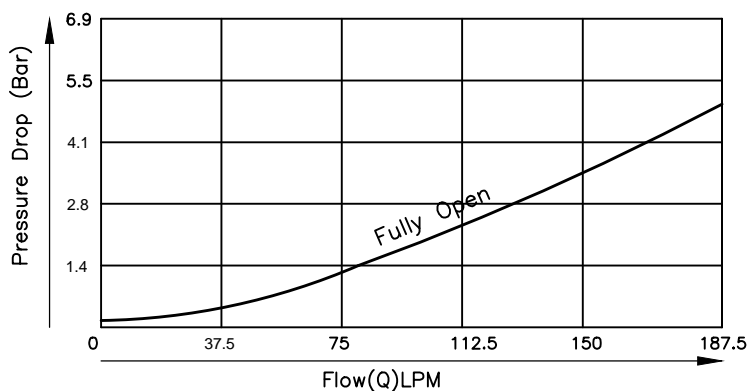
Specifications

Maximum Flow	170 LPM
Maximum Inlet Pressure	245 Bar
Cavity	C16-2

General Description

The NV Series, Needle Valves provides speed control and shut-off where a reverse flow check is not required. The valve acts as a fixed orifice in a hydraulic circuit. The effective size of orifice increase as the tapereded needle is opened, Shut-off is provide when fully closed, Flow can be metered with this cartridge in either direction.

Performance Curve



XX	Mounting Style
00	Cartridge
IL	Inline

ZZ	PORTS
00	Cartridge
12	1" BSP (STD)
34	1-1/4" BSP